

AUXILLIARY FILTERS

How often do you change your hydraulic seals, valves and oil?



Usa

THE HEART OF
HYDRAULIC
CIRCUIT
MAINTENANCE



- Stop Acidity
- Stop corrosion
- Prevent pump wear
- Stop chemical degradation

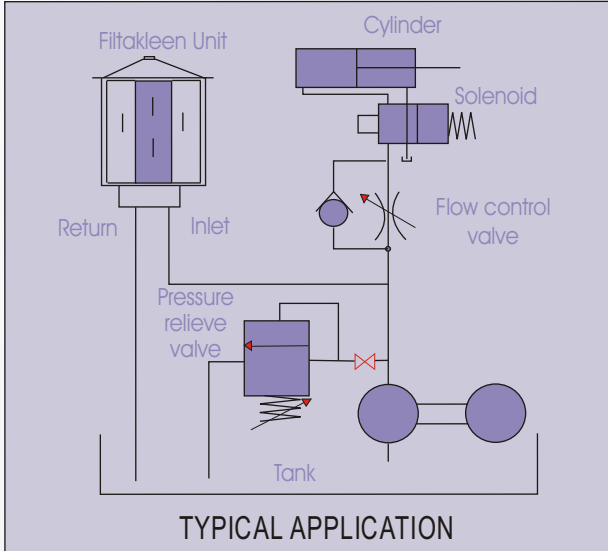


PRO-ACTIVE MAINTENANCE SOLUTIONS

Filtakleen is for hydraulic oil filtration and cannot be used to clean coolant

INTRODUCTION

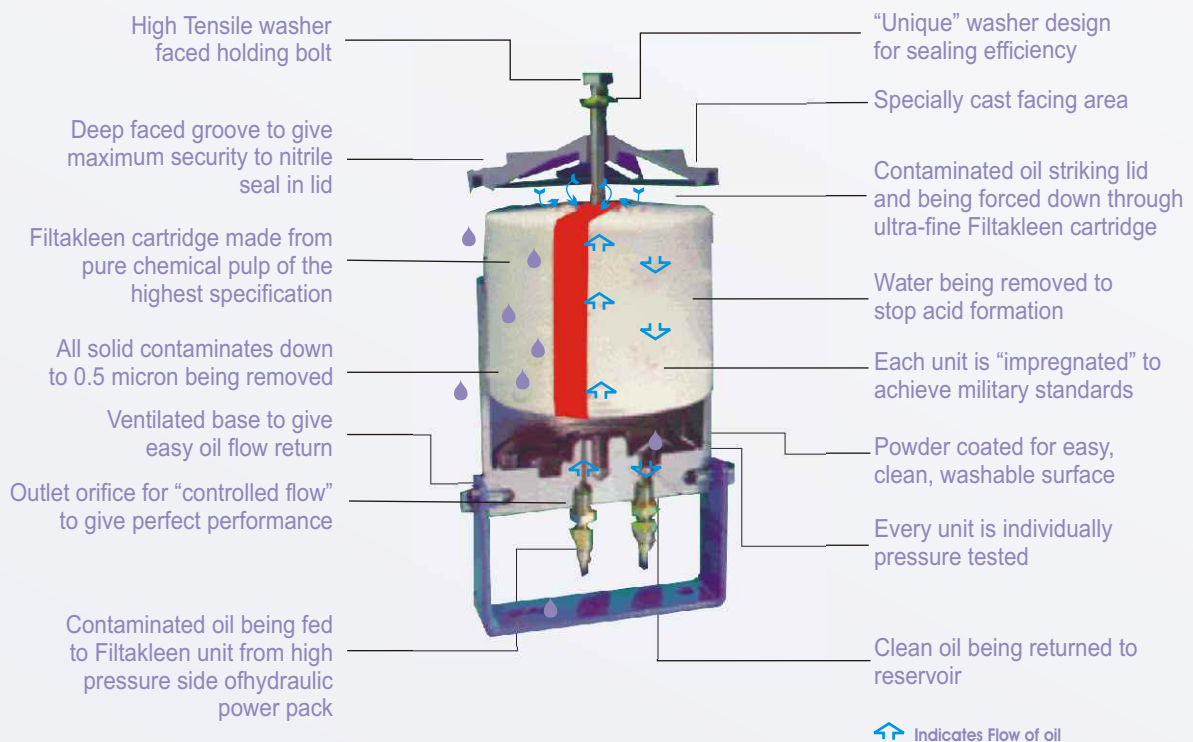
Filtakleen filters works along with full flow filters in hydraulic circuit as a supplement to them. The reason for this is *Filtakleen* takes only a partial flow of the oil from the pressure side of the system by firstly reducing the pressure down to 4-5 bar and then controlling the flow of oil through the *Filtakleen* element to 4-5 litres per minute. In acting in this way the oil, instead of passing through only one layer of filtration as in the full flow filter, is allowed to percolate slowly down through 114 cm height of fine filter medium capable of not only removing ultra fine debris but absorbing water as well. The oil is then returned as NEW directly to the tank.



FILTAKLEEN

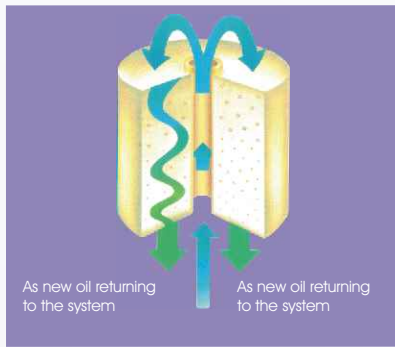
ULTRA FINE DEBRIS REMOVAL UPTO 1 MICRON PARTICLE SIZE.

Once installed *Filtakleen's* filtering efficiency removes all damaging wear particles normally missed by the main filter. This removal of the ultra fine debris at source immediately reduces the risk of malfunctioning control valves as well as dramatically reducing the erosion of the hoses and seals caused by these fine particles. In addition *Filtakleen* takes away the risk of silting of the suction filters which can cause pump damage through cavitation. In fact, the finer tolerances of today's machinery makes the removal of 1-25 micron wear particles a necessity and so by addressing this need with *Filtakleen*, you are creating Major Long Term Benefits in both component life and circuit operation.



100% WATER REMOVAL- STOPS ACIDITY.

By its ability to remove all water content *Filtakleen* reduces dramatically the normal acid buildup in the oil so avoiding the corrosion and chemical degradation of all the seals and hoses as well as preventing unnecessary pump wear and cavitation through invert emulsion.



3 STAGE FILTRATION + TOTAL WATER ABSORPTION

- Removal of large contaminants (15 + microns)
- Removal of fine contaminants (3-15 microns)
- Removal of ultra fine contaminants (1-3 microns)

PLANNED MAINTENANCE.

One of the added benefits with a *Filtakleen* dual action filter is that on machinery running 24 hours a day, 7days a week, you are able to change the *Filtakleen* cartridge literally a 5 minute no mess job, without having to stop your production. You simply turn the ball valve designed in to the inlet side of the system to off. Change the filter and turn back on again. Simple, effective and as good as an oil change.

UNIVERSAL TO ALL CIRCUITS.

No matter what size or type of hydraulic circuit you have in operation, FILTAKLEEN will suit all application from the smallest grass-cutting machine through to the largest injection moulding equipment. Our experience has taught us that whichever industry you are involved in, FILTAKLEEN will give you a positive preventive maintenance package whilst saving valuable resources, that is oil.

MAJOR LONG TERM BENEFITS.

- Saving wear on component parts giving reduced maintenance costs.
- Preventing fine tolerance valves from sticking, giving maximum production time.
- Easy cartridge change without the need to stop machinery or production.
- Saving on oil costs and oil disposal costs.
- Improving system filter life and reducing replacement.

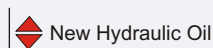
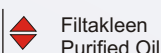
ENVIROMENTALLY FRIENDLY.

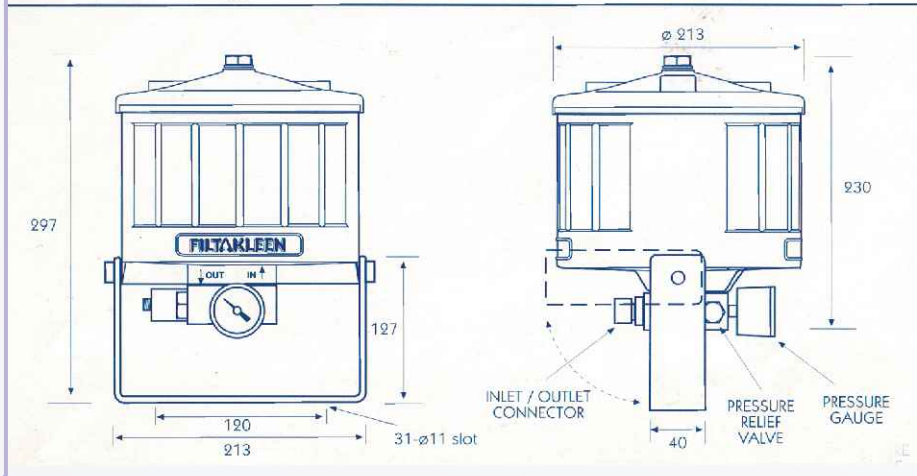
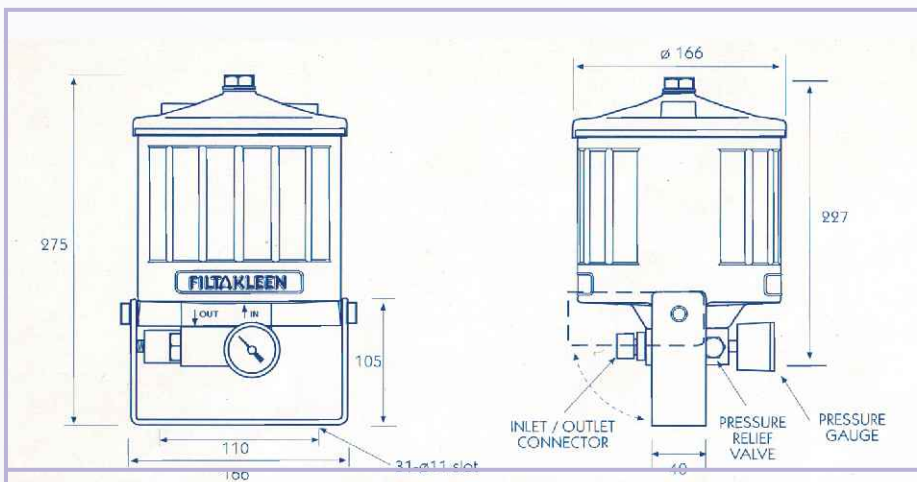
Perhaps we should call ourselves FILTAGREEN because as well as saving valuable finite resources, FILTAKLEEN cartridges come from crop grown timbers. In addition, the use of FILTAKLEEN helps solve a pollution problem of what to do with waste oil.

NAS GRADE (National Aerospace Standard 1638)

NAS GRADE is a widely accepted standard to measure the contamination degree of hydraulic oil.

Particle size (µ)	NAS GRADE (Nos. In 100 ml.)											
	1	2	3	4	5	6	7	8	9	10	11	12
5 - 15	500	1.000	2.000	4.000	8.000	16.000	32.000	64.000	128.000	256.000	512.000	1.024.000
15 - 25	89	178	356	712	1.425	2.850	5.700	11.400	22.800	45.600	91.000	182.400
25 - 50	16	32	63	126	2531	506	1.012	2.025	4.050	8.100	16.200	32.400
50 - 100	3	6	11	22	451	901	180	360	720	1.440	2.880	5.760
>100	1	1	2	4	81	16	32	64	128	256	512	1.024





New Oil

Contaminated Oil



FILTAKLEEN Oil

Note: Letters on back of jar are visible through Filtakleened oil only

SPECIFICATION

PRODUCT CODE	HY 778	MY 788
Material	Aluminium	Aluminium
Application	Hydraulic	Hydraulic
Overall Dimensions	Ø 166	Ø 211
Height	275	297
Weight	3.2 Kgs	4.2 Kgs
Inlet Connector	1/4" BSP	1/4" BSP
Outlet connector	3/8" BSP	3/8" BSP
Inlet Pressure	350 bar	350 bar
Reduced Inlet Pressure	4.5 bar	4.5 bar
Flow Rate	4.1 L/min	6.1 L/min
Element Type	HYC - 78	MYC - 88
Tank Capacity	10-900 litres	900 - 2000 litres
Filtering Efficiency	NAS 6-7	NAS 6-7
Pressure Gauge	Glycerine 0-11 bar	Glycerine 0-11 bar
Max. Oil Temperature	79° C (190° F)	79° C (190° F)
Viscosity Range	9-220 cST	9-220 cST



Sole representatives in India

Guindy Machine Tools Limited

Regd. Office & Works:

196, Velachery-Tambaram Main Road,
Pallikaranai, Chennai-600 100, INDIA

Tel.: +91-44-22460627 / 28 / 29 Fax.: +91-44-22460112